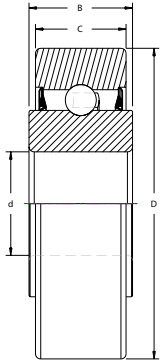
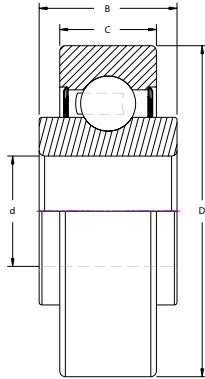


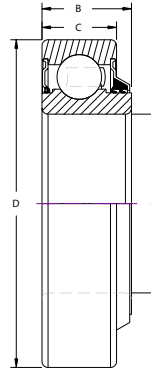
Agricultural Bearing Series



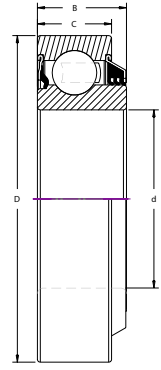
TYPE 1



TYPE 2



TYPE 3

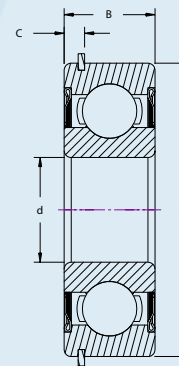


TYPE 4

Bearing Number	Dimensions (inch)				Load Rating (lbf)		Drawing
					Dynamic	Static	
	d	D	B	C	Cr	Cor	
203KRR2	0.640	1.5748	0.7200	0.4724	2100	1000	Type 2
203KRR3	0.628	2.0000	0.5906	0.5906	3000	1400	Type 1
203KRR5	0.515	1.5748	0.7200	0.4724	2100	1000	Type 2
204KRR2	11/16 hex	1.8503	0.8250	0.5511	3000	1400	Type 2
204RY2	0.626	1.7805	0.7303	0.6053	3000	1400	Type 3
205RVA	0.750	2.0467	0.8253	0.5859	3500	1700	Type 4



TYPE 6



TYPE 7

Bearing Number	Dimensions (inch)				Load Rating (lbf)		Speed Rating (RPM)	Drawing
					Dynamic	Static		
	d	D	B	C	Cr	Cor		
99502H	0.6250	1.3750	0.4331	-	1720	850	13000	Type 6
99502HNR	0.6250	1.3750	0.4331	0.1100	1720	850	13000	Type 7
Z9504B	0.7500	1.7805	0.6100	-	2880	1500	9700	Type 6